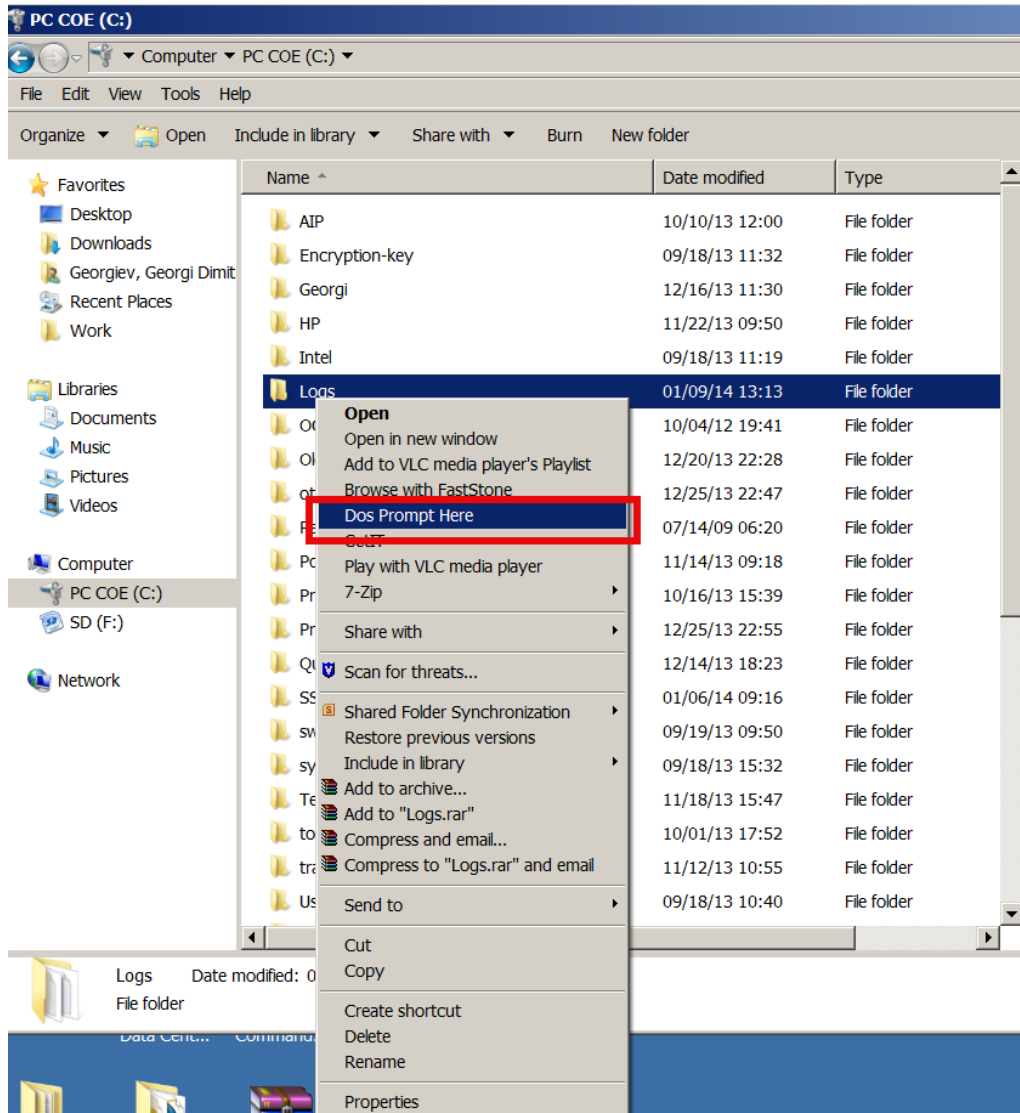


## Windows Explorer (Open directory in command prompt preserving dir PATH) - Add Dos Prompt Here feature via tiny registry tweak

Author : admin



If you have to use Windows on system administration level, you had to use command prompt daily, thus its useful to be able to be able to open Command Line starting from desired directory with no need to copy directory Path by hand and CD to it manually.

By default Command Prompt, **cmd.exe** always opens itself setting a path to user home directory, reading what is defined by *win system variable* **%USERPROFILE%** or **%HOMEPATH%** - MS Windows equivalent of UNIX's **\$HOME** shell variable.

To [add open in DOS Prompt Here Command Prompt option to Windows Explorer menus its necessary to apply few rules to Windows registry DB](#)

Use [above Download link](#) and launch it and from there on clicking with right Mouse button to any directory will enable you to open directory in *CMD.EXE*.

Here is content of little registry tweak adding the new menu **Dos Prompt Here** button  
Windows Registry Editor Version 5.00

```
[HKEY_CLASSES_ROOT\Directory\shell\DosHere]
```

```
@="Dos &Prompt Here"
```

```
[HKEY_CLASSES_ROOT\Directory\shell\DosHere\Command]
```

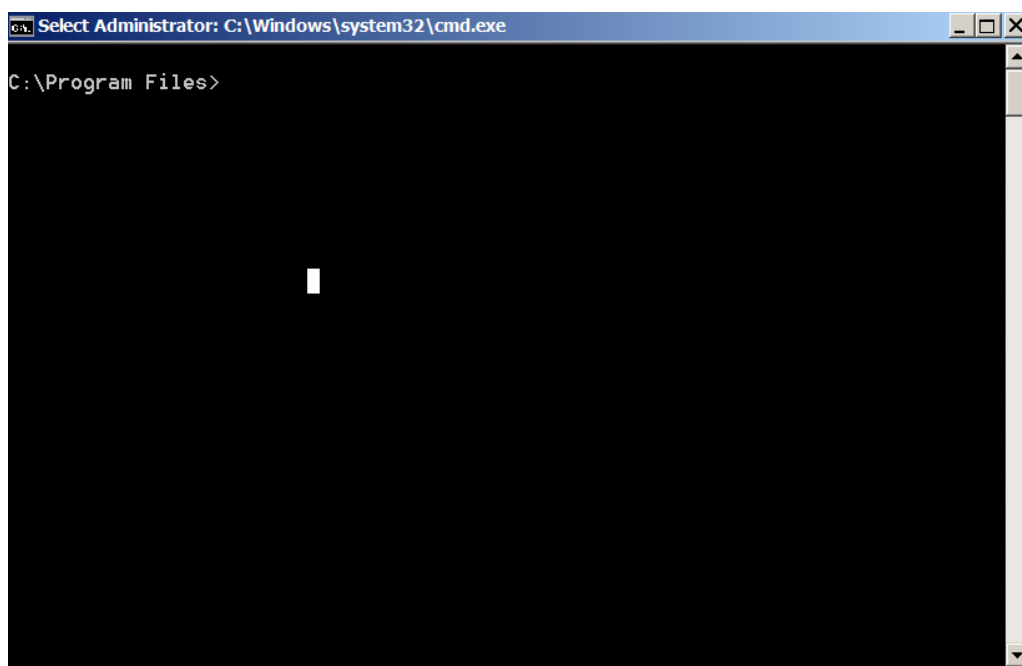
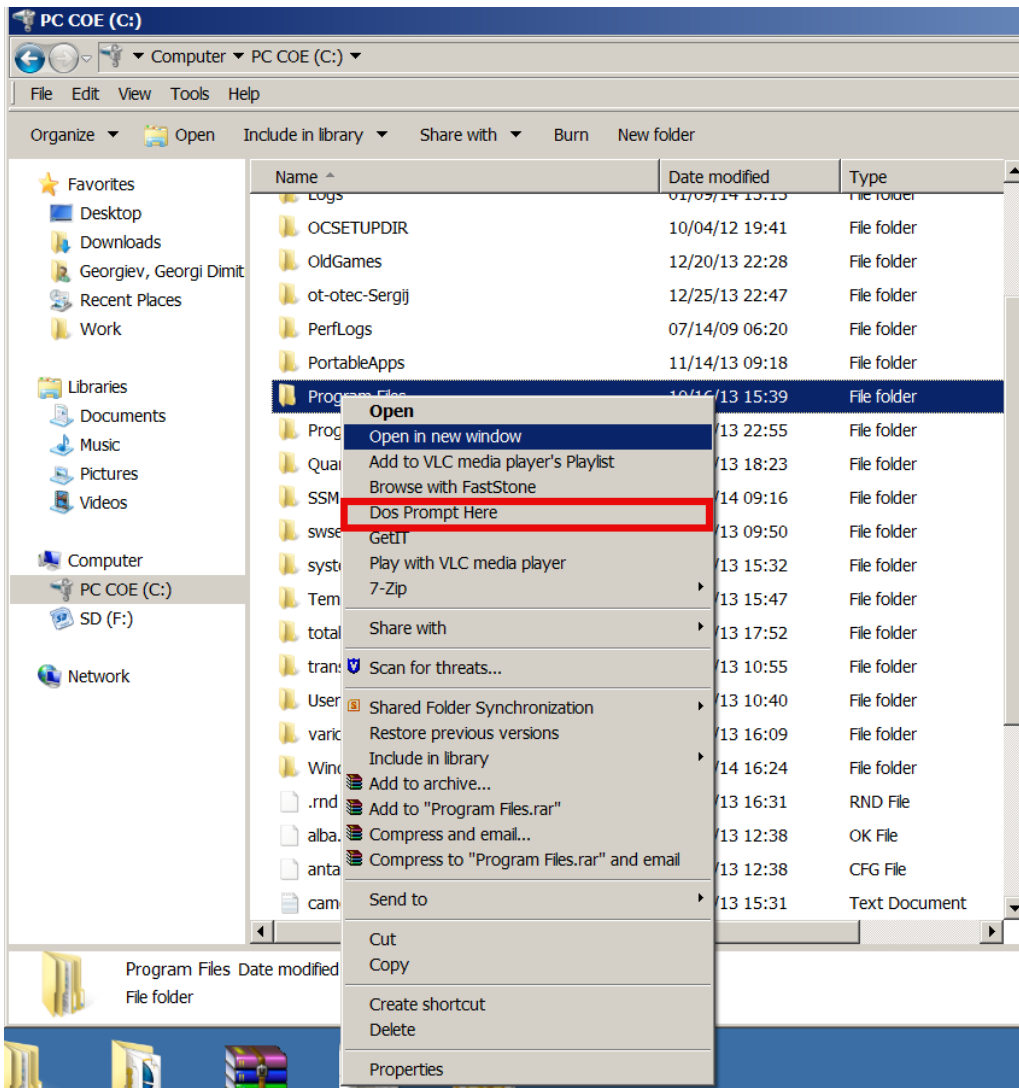
```
@="cmd.exe /k cd %1"
```

```
[HKEY_CLASSES_ROOT\Drive\shell\DosHere]
```

```
@="Dos &Prompt Here"
```

```
[HKEY_CLASSES_ROOT\Drive\shell\DosHere\Command]
```

```
@="cmd.exe /k cd %1"
```



This little registry code is originally for **Windows 2000**, anyways it is compatible with all NT technology based Windowses, **Add DOS Prompt Here tweak works fine on Windows XP, Windows 7 and Windows 8 (Home, Pro and Business editions).**

By Mentioning **\$HOME** its interesting to say Windows equivalent of Linux's as it might be useful to know:

```
linux:~# echo $HOME  
/home/hipo
```

is

```
C:\> echo %USERPROFILE%  
C:\Users\georgi
```

To list all Windows *Command Prompt* environment variable equivalent to Linux's bash shell *env* / *setenv* is **SET** command), here is example output from my Winblows;

```
C:\Users\georgi> SET  
ALLUSERSPROFILE=C:\ProgramData  
APPDATA=C:\Users\georgi\AppData\Roaming  
CLASSPATH=.;C:\Program Files (x86)\Java\jre6\lib\ext\QTJava.zip  
CommonProgramFiles=C:\Program Files\Common Files  
CommonProgramFiles(x86)=C:\Program Files (x86)\Common Files  
CommonProgramW6432=C:\Program Files\Common Files  
COMPUTERNAME=GEORGI  
ComSpec=C:\Windows\system32\cmd.exe  
DEFLOGDIR=C:\ProgramData\McAfee\DesktopProtection  
FP_NO_HOST_CHECK=NO  
HOMEDRIVE=C:  
HOMEPATH=\\Users\georgi  
LOCALAPPDATA=C:\Users\georgi\AppData\Local  
NUMBER_OF_PROCESSORS=4  
OS=Windows_NT  
Path=C:\Program Files\RA2HP\;C:\Windows\system32;C:\Windows;C:\Windows\S  
Wbem;C:\Windows\System32\WindowsPowerShell\v1.0;C:\Program Files\WIDCOM  
oth Software\;C:\Program Files\WIDCOMM\Bluetooth Software\syswow64;C:\Pr  
les (x86)\Hewlett-Packard\HP ProtectTools Security Manager\Bin\;C:\Progr  
\ActivIdentity\ActivClient\;C:\Program Files (x86)\ActivIdentity\ActivCl  
\Program Files (x86)\QuickTime\QTSystem\  
PATHEXT=.COM;.EXE;.BAT;.CMD;.VBS;.VBE;.JS;.JSE;.WSF;.WSH;.MSC  
PROCESSOR_ARCHITECTURE=AMD64
```

```
PROCESSOR_IDENTIFIER=Intel64 Family 6 Model 58 Stepping 9, GenuineIntel
PROCESSOR_LEVEL=6
PROCESSOR_REVISION=3a09
ProgramData=C:\\ProgramData
ProgramFiles=C:\\Program Files
ProgramFiles(x86)=C:\\Program Files (x86)
ProgramW6432=C:\\Program Files
PROMPT=$P$G
PSModulePath=C:\\Windows\\system32\\WindowsPowerShell\\v1.0\\Modules\\
PTSMInstallPath_X86=C:\\Program Files (x86)\\Hewlett-Packard\\HP ProtectToo
ity Manager\\
PUBLIC=C:\\Users\\Public
QTJAVA=C:\\Program Files (x86)\\Java\\jre6\\lib\\ext\\QTJava.zip
SESSIONNAME=Console
SystemDrive=C:
SystemRoot=C:\\Windows
TEMP=C:\\Users\\georgi\\AppData\\Local\\Temp
TMP=C:\\Users\\georgi\\AppData\\Local\\Temp
USERDNSDOMAIN=EMEA.CPQCORP.NET
USERDOMAIN=EMEA
USERNAME=georgi
USERPROFILE=C:\\Users\\georgi
VSEDEFLOGDIR=C:\\ProgramData\\McAfee\\DesktopProtection
windir=C:\\Windows
windows_tracing_flags=3
windows_tracing_logfile=C:\\BVTBin\\Tests\\installpackage\\csilogfile.log
```

Hope this little trick hopes someone out there.

I will be glad to hear of **other cool useful windows registry tweaks?**