

## Adding Teamviewer to auto start on Linux GNOME login

**Author :** admin

Administrating Linux via graphical interface is not common, however sometimes it is necessary. There are plenty of ways to remotely administrate with GUI Linux. You can connect to remote Xserver and launch X session via xinit, connect via (Gnome Display Manager) GDM, [use nomachine NX server / client \(if you're on slow connection line\)](#) or use the good old Teamviewer.

As Teamviewer works pretty well on both Windows and Linux in last times I like using teamviewer as a standard. It is freeware and it often disconnects with the annoying Trial message, but in general for managing something quick on remote desktop it is nice.

To use teamviewer, you need to have it installed on the Linux host via deb or rpm:

Whether on Debian / Ubuntu use:

```
# wget http://www.teamviewer.com/download/version_8x/teamviewer_linux_x64.deb
....
# dpkg -i teamviewer_linux_x64.deb
...
....
```

On Fedora, CentOS, RHEL run:

```
# wget -q http://www.teamviewer.com/download/teamviewer_linux.rpm
# rpm -Uvh teamviewer_linux.rpm
....
```

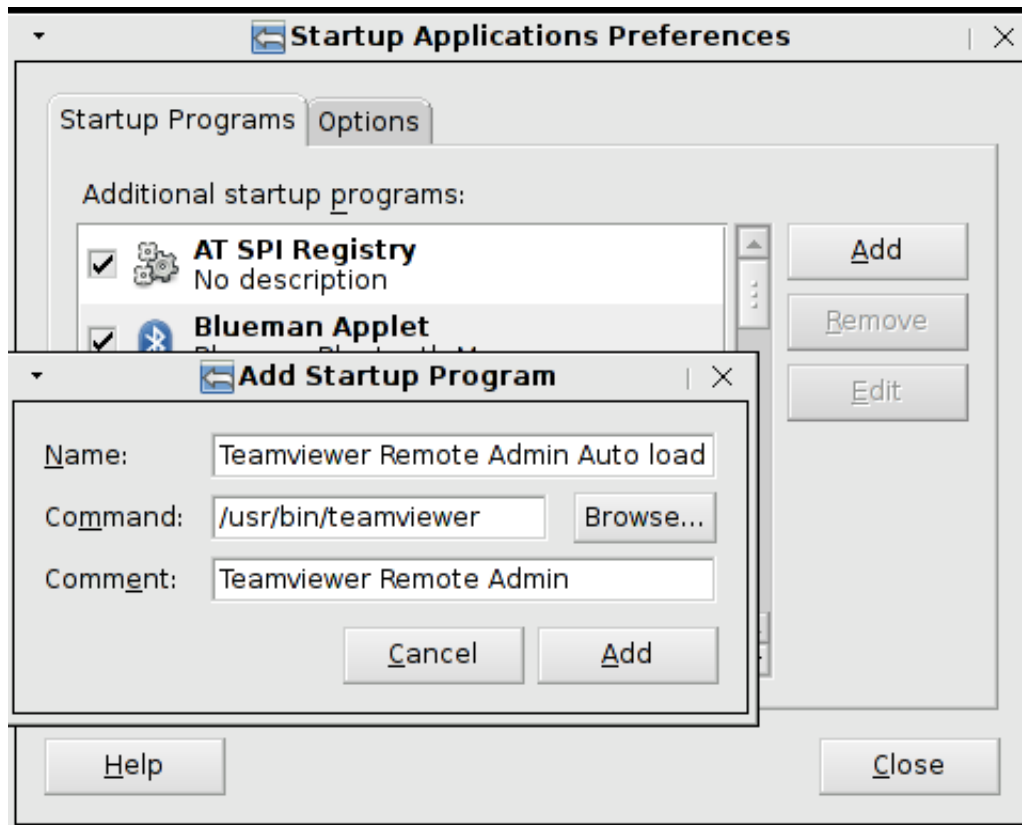
Once package is installed teamviewer is installed in **/opt/teamviewer/\*** there is a tiny wrapper run script in **/usr/bin/teamviewer** - evoking TeamViewer to be run via wine emulation.

Hence to make *TeamViewer* start on certain user GNOME login the script has to run on GNOME user login session.

In both GNOME 2 and GNOME 3 what is run on user login is managed through **gnome-session-properties** thus **/usr/bin/teamviewer** has to be set to run through **gnome-session-properties** (to run it press **ALT+F2** or type it directly in **gnome-terminal**)

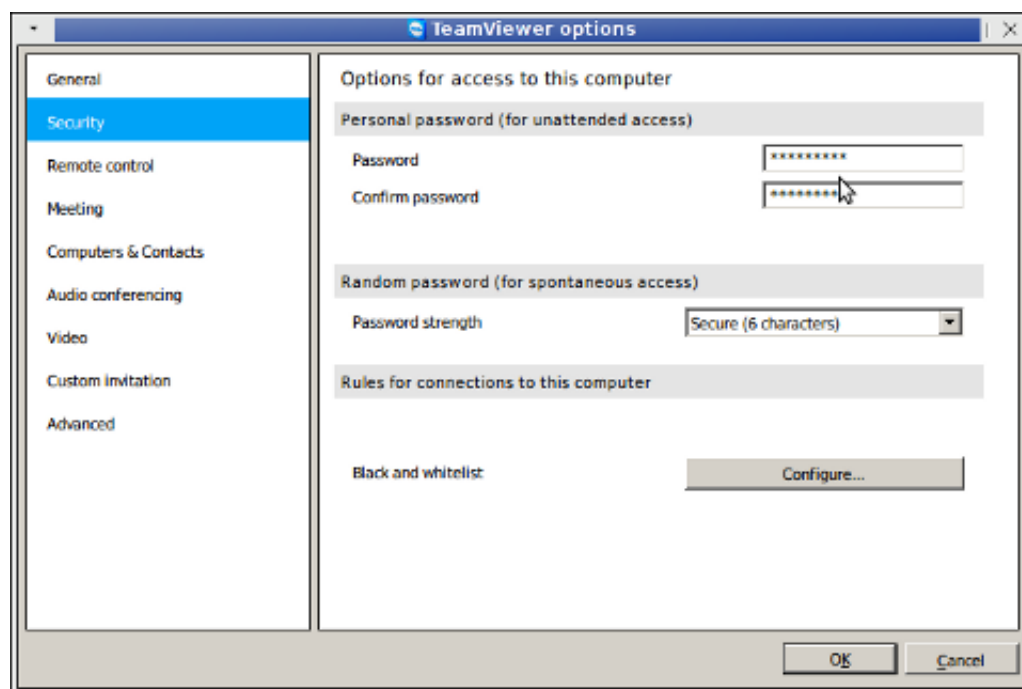
```
user@linux:~$ gnome-session-properties
```

A window like in below screenshot pops up and from there Add *TeamViewer*.

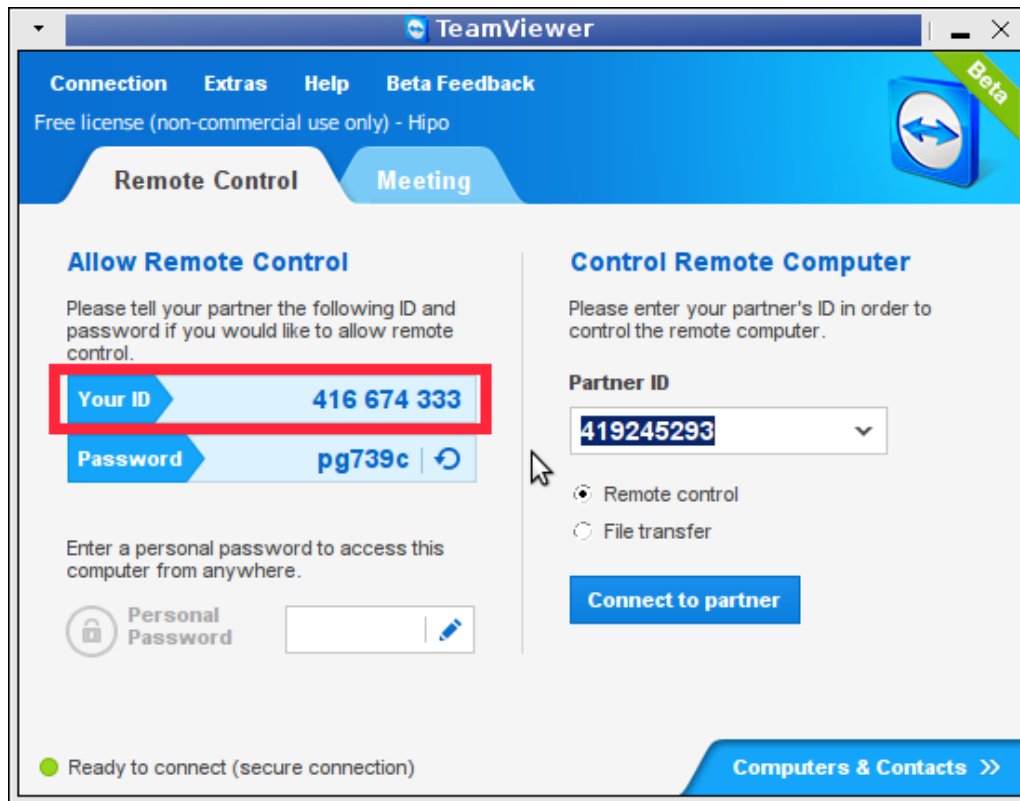


To be able to later connect via a Remote host with another TeamViewer peer launch TeamViewer and configure permanent password through menus:

**Extras -> Options -> Security**



All left is to write down your *Teamviewer Remote Connect ID* and permanent set password



After next succesful GNOME login teamviewer will just pop-up. Enjoy