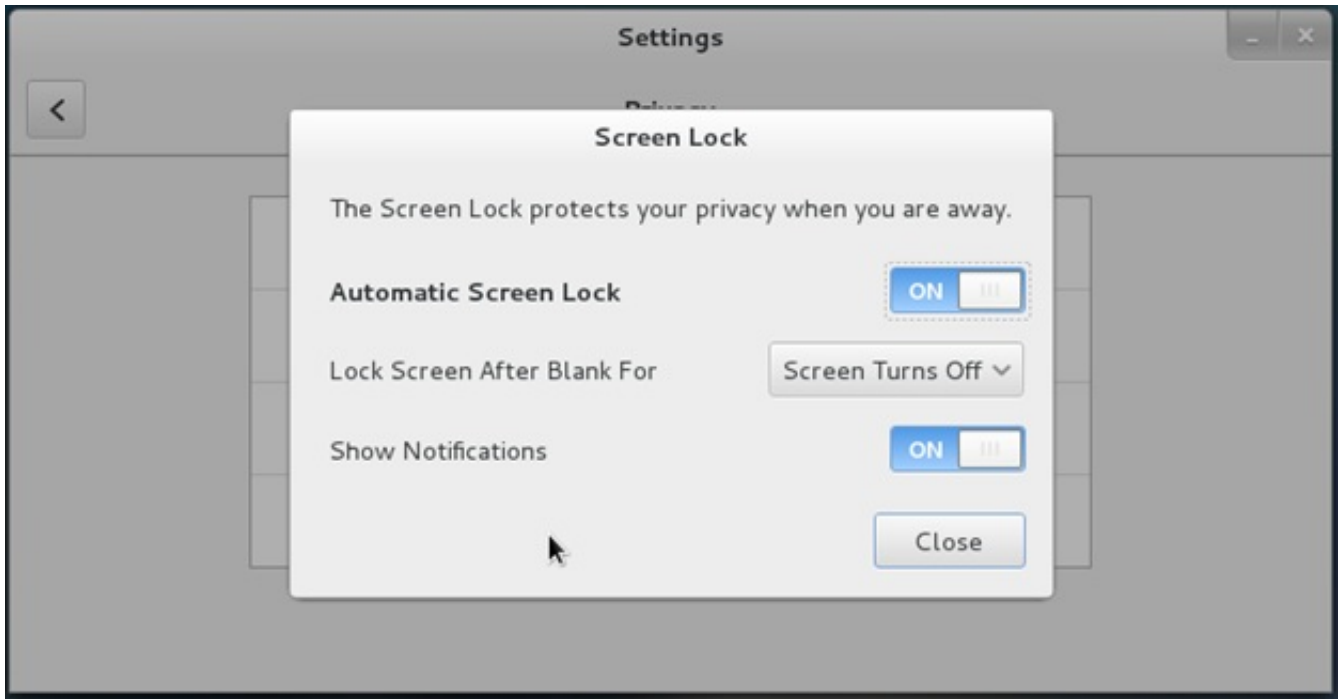


## Change GNOME lock time settings in Linux

Author : admin



In **GNOME 3.X** The **screen lock time setting** is set either to *1 minute 15 minutes or NEVER*.  
So what if you would like to,

Set the gnome screen lock settings value to 30 minutes or one Hour

Here is how:

For 30 minutes lock screen setting:

```
linux:~$ gsettings set org.gnome.desktop.session idle-delay 1800
```

Set GNOME lock time to 1 hour

```
linux:~$ gsettings set org.gnome.desktop.session idle-delay 3600
```

The setting is set in seconds so quickest way to calculate is to divide by **60 (seconds)**, you can calculate easily the time you like with BC (arbitrary precision calculation language) like so:

```
linux:~$ echo '3600/60' | bc
60
```

Lets say you would like to set your screen to lock every 3 hours, the **delay** value to set in **org.gnome.desktop.session** would be:

```
linux:~$ echo '3600*3' | bc
10800
```

Once you set the value to a different than the 3 recognized ones would show in **GNOME Control**

**Center** as Never (depending on the distro).