

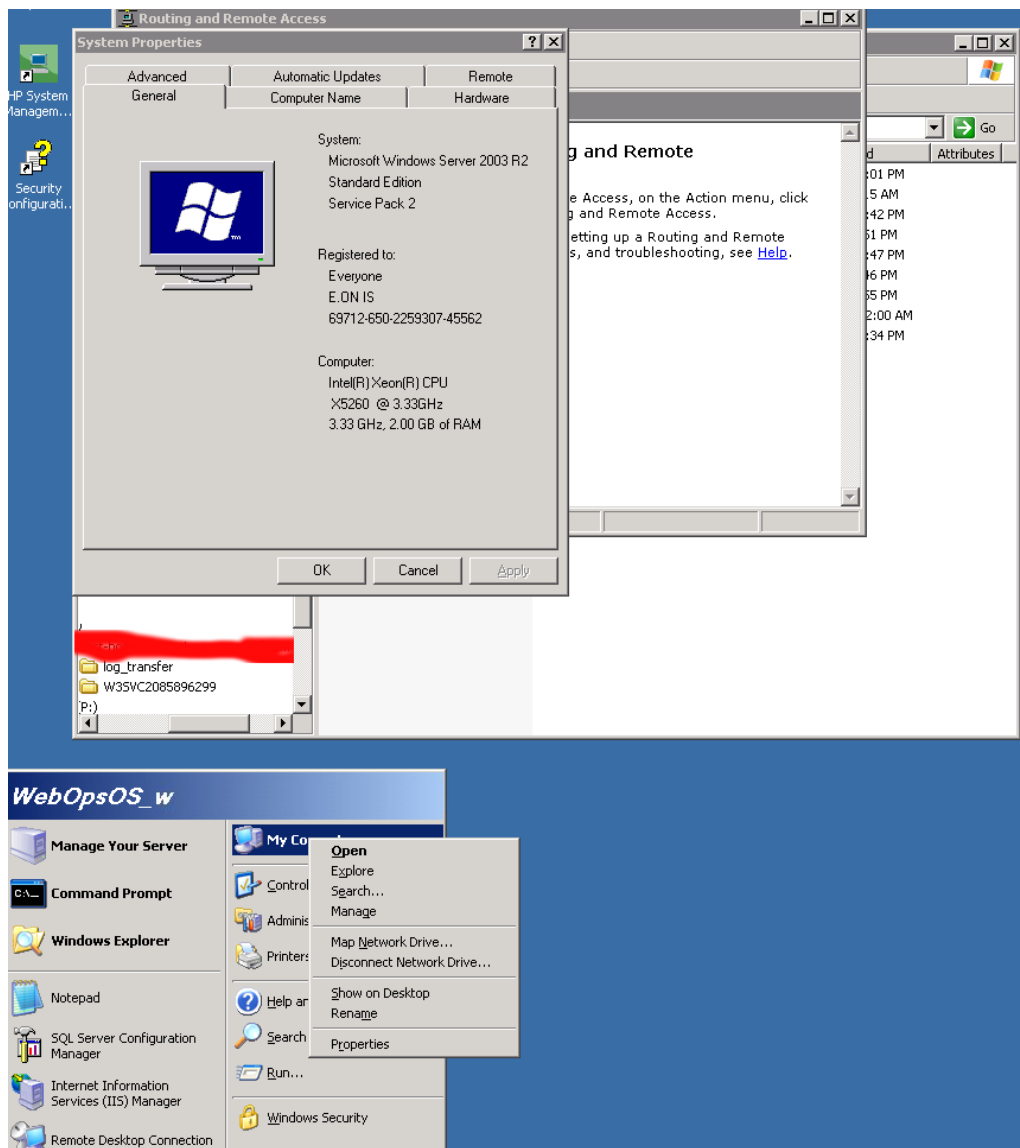
How to check Microsoft IIS webserver version

Author : admin

If you have to **tune some weirdly behaviour Microsoft IIS (Internet Information Services) webserver**, the first thing to do is to collect information about the system you're dealing with - **get version of installed Windows and check what kind of IIS version is running on the Windows server?**

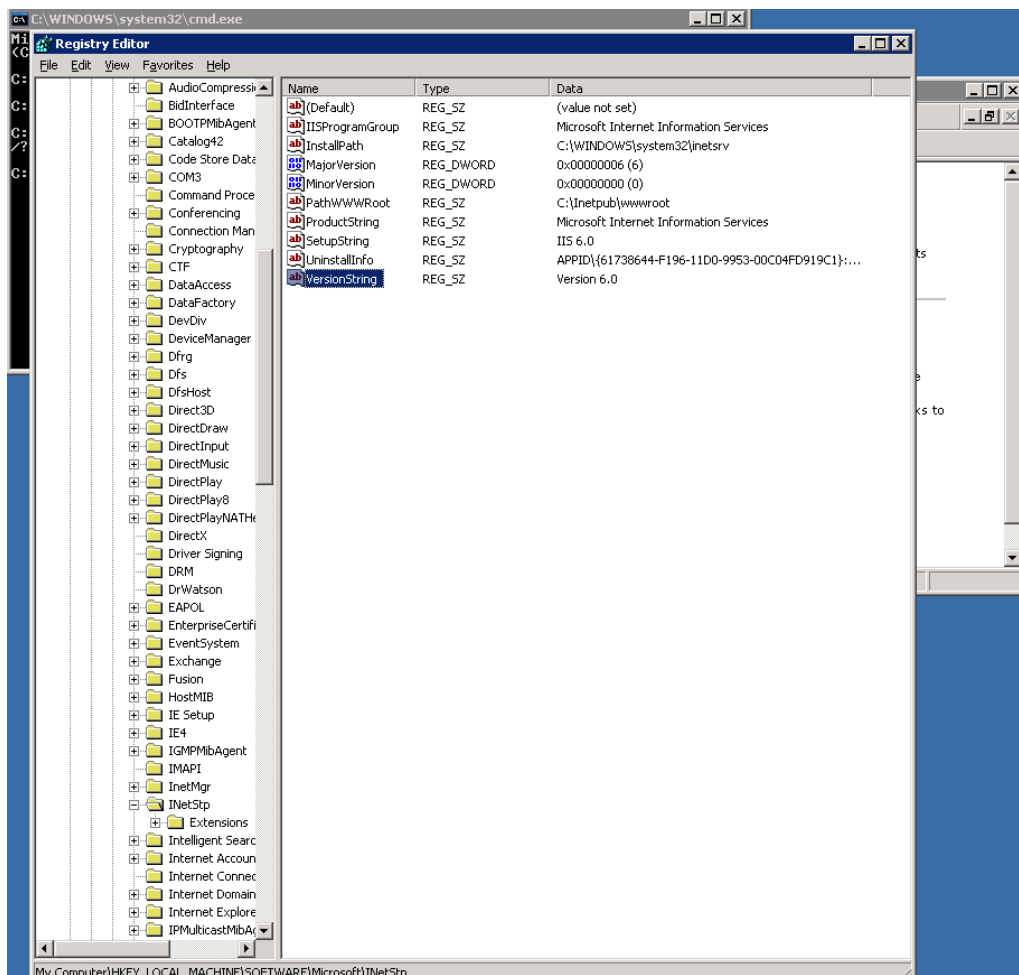
To get the version of installed Windows on the system you just logged in, the quickest way I use is:

Start -> My Computer (right mouse button) Properties



Run **regedit** from **cmd.exe** and go and check value of registry value:

HKEY_LOCAL_MACHINE\SOFTWARE\MicrosoftInetStp\VersionString



As you can see in screenshot in this particular case it is IIS version 6.0.

An *alternative way to check the IIS version* in some cases (if *IIS version return is not disabled*) is to **telnet** to webserver:

telnet your-webserver 80

Once connected Send:

HEAD / HTTP/1.0

Also on some *Windows* versions it is possible to **check IIS webserver version from Internet Information Services Management Console**:

To check IIS version from IIS Manager:

Start (button) -> Control Panel -> Administrative Tools -> "Internet Information Services" IIS Manager

From *IIS Manager* go to:

Help -> About Microsoft Management Console

Here is a list with *most common IIS version output* you will get depending on the version of *Windows server*:

Windows NT 3.51 1.0
Windows NT 4 2.0-4.0
Windows Server 2000 5.0

Windows XP Professional 5.1

Windows Server 2003 6.0

Windows Vista 7.0

Windows Server 2008 7.0

Windows Server 2008 R2 7.5

Windows 7 7.5

Windows Server 2012 8.0

Windows 8 8.0

Windows Server 2012 R2 8.5

Windows 8.1 8.5

If you have only an upload FTP access to a Folder served by IIS Webserver - i.e. no access to the Win server running IIS, you can also grasp the IIS version with following **.ASP** code:

Save the file as **anyfile.asp** somewhere in IIS docroot and invoke it in browser.