



THE *National*<sup>®</sup>

## OMNI-DENOMINATION POSTAGE MACHINE

- Speeds up mailing
- Furnishes single, gummed, meter stamps
  - All stamps of uniform size
- Provides visible reading counter
  - Indicates the total postage issued to date

DETAIL SHEET

L32 4.28 X 0392

609	0.68	0392
407	0.31	0393
105	0.13	0394
409	0.38	0395
519	1.07	0396
206	0.14	0397

306	0.19	0415
309	0.25	0416
L08	0.11	0417
621	1.52	0418
404	0.21	0419
715	1.40	0420

L33 5.54 X 0421

RIGHTED LABEL



PARCEL POST LABEL



PARCEL POST (FOURTH CLASS)

Factories, mail-order houses, and similar concerns use more dollar and cent postage for Parcel Post than for all other classes of mail. Such a postage volume must be controlled. The National Postage Machine gives a mechanical control providing speed in mailing, protection, and a running inventory.

Parcel Post of the Fourth Class includes all parcels weighing over eight ounces. With the use of this machine, size, weight and amount of postage are set up on the keyboard.

FEB 24 195-



SECOND-CLASS MAIL

Second-Class mail includes newspapers and periodicals. The machine can be used for this class with the weight and amount of postage being set up on the keyboard.

FIRST-CLASS LABEL

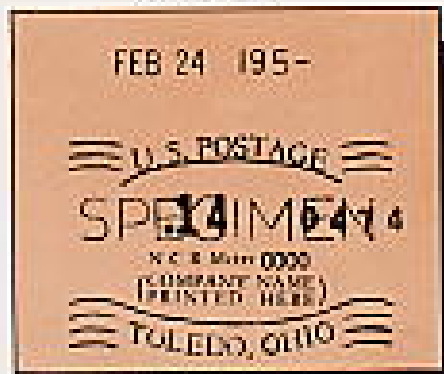


THIRD-CLASS MAIL

Parcels weighing eight ounces or less are considered Third-Class mail. Zoning has no bearing on this class of mail, rates being the same for all sections of the country.

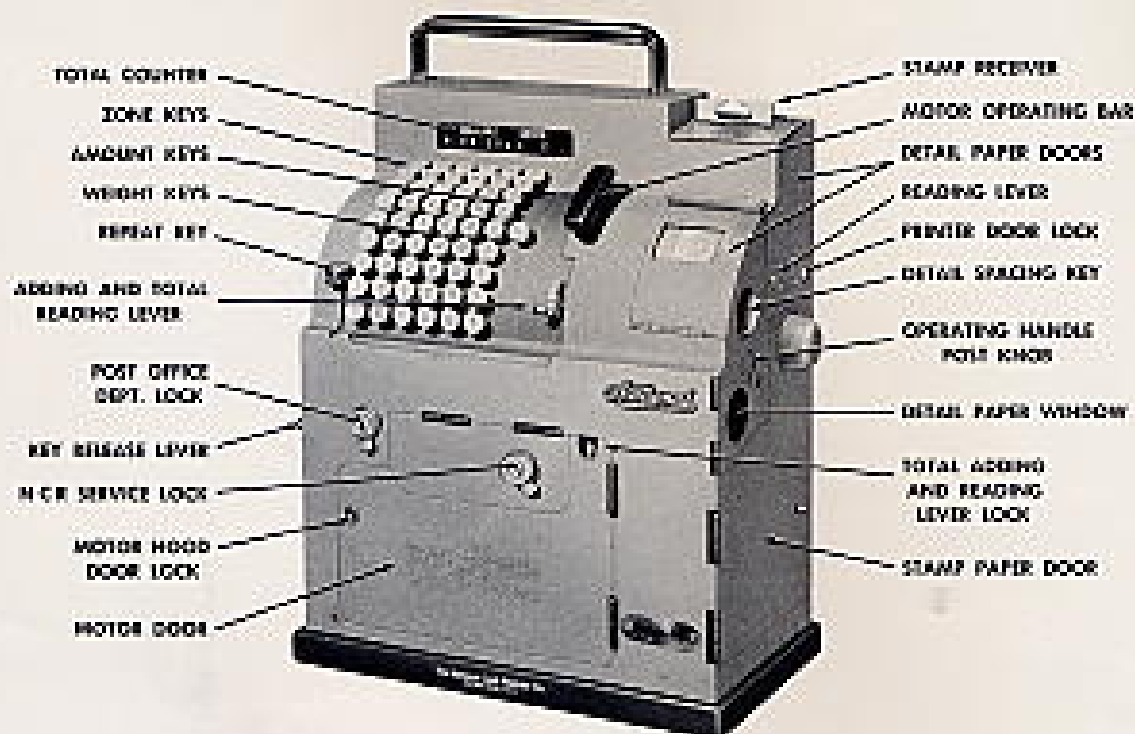
The 3/4-cent key is used to advantage on Third-Class mail, as the rate involves this fraction of a cent. Weight and amount of postage are all that are set up on the keyboard with the National Postage Machine.

FOREIGN LABEL



FIRST-CLASS MAIL

The National Postage Machine uses labels for either domestic or foreign mail. It is especially adapted to heavy air mail. On all First-Class mail it is only necessary to set up the amount of postage on the keyboard.



## THE NATIONAL OMNI-DENOMINATION POSTAGE MACHINE

### Important Advantages of This Machine

Tests have proved a 35% to 40% saving in time over use of postage stamps or mechanical devices requiring more than one recording operation.

The postage meter stamps issued by this machine are perforated and gummed . . . and as issued show the date, zone and weight (when necessary), amount of postage, serial number, meter number, and name of the issuing post office.

As each stamp is printed, a duplicate record, showing zone, weight, amount, and serial number, is printed on a detail-strip inside the machine. Thus, a complete record of every postage stamp issued is available at all times for reference.

Mail goes direct to the sorting room at the post office saving the time lost in cancellation.

A single stamp for the exact amount of postage saves time in selecting and affixing stamps. This includes special charges, such as C.O.D., insured, special delivery, special handling, air mail, etc.

The repeat key speeds operation by eliminating setting up figures for consecutive pieces of mail of same postage requirements.

The machine saves the time consumed in buying, sorting, requisitioning, replenishing, and attempting to account for stamps.

Stops losses through postage stamps being destroyed, mislaid, or stolen.

Eliminates placing "over" postage on pieces of mail during rush periods. Also stops mistakes due to selecting the wrong stamp or combination of stamps to make up postage. All mental calculation is eliminated.

Meter number and return address establish identity of the sender. The post office will not accept such mail from unknown parties.

The machine gives a running inventory at any time. It saves time formerly lost in general office and mailing room.

Provides a quick and accurate means of making a report to the post office when requested, as to amount of postage and number of pieces in each day's mailing.

